

Paris Session 2022



Data Science and AI for On-line Diagnosis of Rotating Machines from Pre-existing Sensors, with applications in Hydro Generators and Wind Generators

A1 - Rotating Electrical Machines

PS2 - Asset Management of Electrical Machines

Question 2.2

Marcos Alves - Brazil



Group Discussion Meeting



© CIGRE 2022

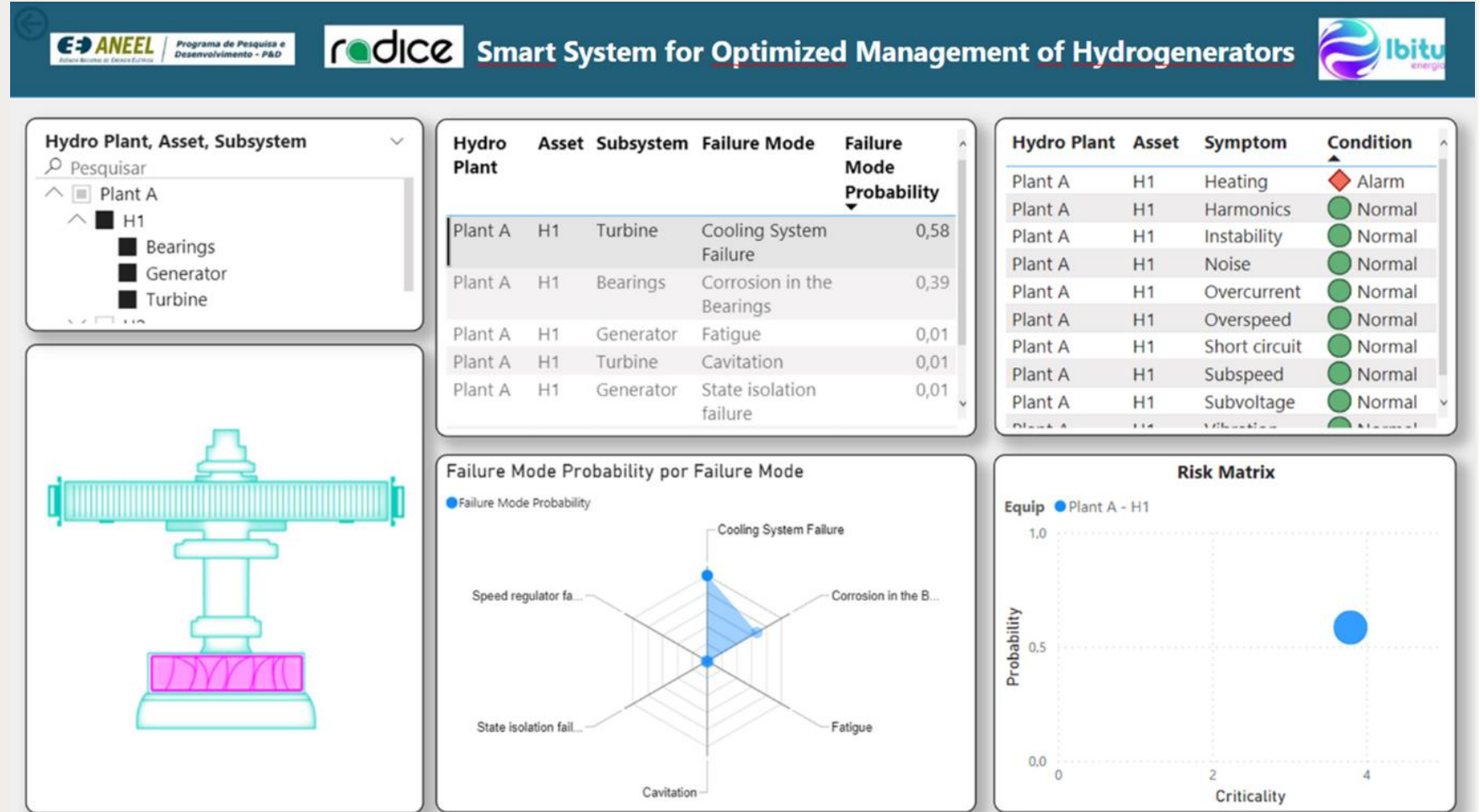
1



© CIGRE 2021

AI for On-line Diagnosis of Hydro Generators and Wind Generators

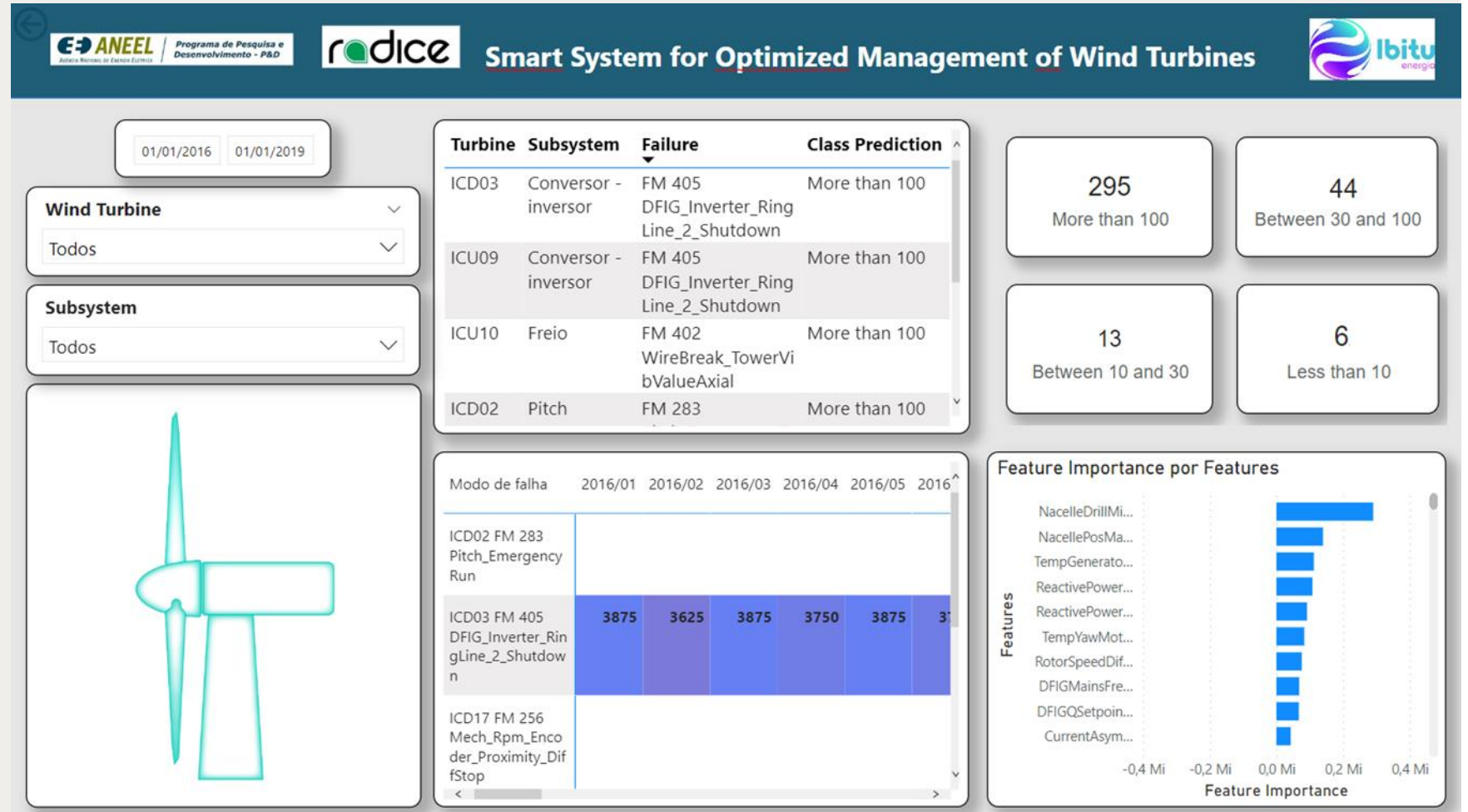
- Easy-to-use dashboard interfaces, customizable for each type of asset and diagnostics information



Group Discussion Meeting

AI for On-line Diagnosis of Hydro Generators and Wind Generators

- Intuitive information for experts on the assets. Knowledge on data science, ML and others not necessary



Group Discussion Meeting

AI for On-line Diagnosis of Hydro Generators and Wind Generators

- Asset Management platform is able to automatically create tickets based on the diagnostics / prognostics generated by AI tools
- Automatic alerts to maintenance teams on pending issues in order to prompt creation of Service Orders and other actions.

Treetech - EAM Configuration Register Maintenance Operação Reports Analytics admin Search menus (C)

Technical Note

Listing of Technical Notes

Filter search

+ Insert Change Delete Generate Work Order

<input type="checkbox"/>	Technic Note No.	Technical Note Type	Maintenance Type	Title	Object	Responsible section	Work Order No.	OS Status	NT Canceled
<input type="checkbox"/>	61	Defect	Corrective Maintenance	SIGOAH - Hydrogenerator Failure Diagnosis	SCL01 - 595-00007 - Hidrelétrica Santa Clara - Unidade Geradora 01	Hydro Maintenance			
<input type="checkbox"/>	62	Defect	Corrective Maintenance	SIGOAH - Hydrogenerator Failure Diagnosis	QQX03 - 595-00000 - Hidrelétrica Quebra-Queixo - Unidade Geradora 03	Hydro Maintenance			
<input type="checkbox"/>	63	Defect	Corrective Maintenance	SIGOAH - Wind Turbine Failure Diagnosis	ICU01 - 590-00000 - Complexo Icarai I - Aerogerador 01	Wind Maintenance			

Mostrando o(s) registro(s) 1 até 3 de um total de 3

Primeiro ← Anterior 1 Próximo → Último

EAM - Enterprise Asset Management 2.47.25.45075 www.treetech.com.br

Group Discussion Meeting